

# Why HUF COR ?

## Partitions Must Control Sound

We test our products in our sound laboratory to make certain they meet or exceed our published acoustical ratings. The laboratory is certified by the National Voluntary Laboratory Accreditation Program (NVLAP) and, like our ISO certification, we undergo regular inspection to make certain we adhere to their strict regulations.

## Renovation and Repair

Not only do we provide new products, we also offer retrofit service for HUF COR products and those manufactured by others. Contact your local HUF COR representative for a free assessment of your needs.

## Worldwide Availability

HUF COR's US manufacturing facility is located at our headquarters in Janesville, Wisconsin. HUF COR US, China, Hong Kong, Macau, Malaysia and Taiwan are providing our Aluminum 5000R product in their respective market for flexible space management. In addition to the Aluminum 5000R product, other HUF COR partition lines are also available in Australia, Bangladesh, Brazil, Canada, China, Finland, France, Germany, Hong Kong, India, Indonesia, Japan, South Korea, Mexico, Malaysia, Macau, New Zealand, Philippines, Russia, South Africa, Singapore, Sri Lanka, Spain, Taiwan, Thailand, United Arab Emirates and Vietnam. Check our website for contact details in the respective location.



## The HUF COR Commitment to Green Manufacturing, Sustainability and LEED™

HUF COR is committed to being an industry leader in protecting the environment by reducing pollutants and minimizing our environmental impact on the air, water and land. For more than 10 years we utilized a "Green" approach to our manufacturing techniques and energy consumption, all while increasing the percentage of materials that we recycle, reuse, repair, restock or return for salvage. Today, HUF COR's commitment and progress toward Green manufacturing is greater than ever as we continue to develop standards that support various LEED™ (Leadership in Energy and Environmental Design) points to assist the achievement of LEED™ certification goals.



Get more with HUF COR | [www.hufcor.com.my](http://www.hufcor.com.my)

Design & Technology Developed by HUF COR in the USA



**HUF COR Malaysia**  
No.10, Jalan TIAJ 2/7, Taman Industri Alam Jaya,  
42300 Bandar Puncak Alam, Selangor D.E. Malaysia  
T: (603) 6038 3833 F: (603) 6038 3555 E: [hufcor@hufcor.com.my](mailto:hufcor@hufcor.com.my)

**HUF COR Singapore**  
10 Ubi Crescent, #02-27, Ubi TechPark, Singapore 408564  
T: (65) 6742 9062 F: (65) 6844 4710  
E: [hufcor@hufcor.com.sg](mailto:hufcor@hufcor.com.sg)

All rights reserved. No part of this publication may be reproduced, stored in any retrieval system, or transmitted in any form or by any means, electronic, mechanical, photocopying, recording, or otherwise without the publisher's prior written permission.



5000R30513a



# Aluminum 5000R



# Aluminum 5000R

Partitions • Operable | Vertical Lift | Glasswall | Automatic

[www.hufcor.com.my](http://www.hufcor.com.my)



# Aluminum 5000R

Aluminum 5000R



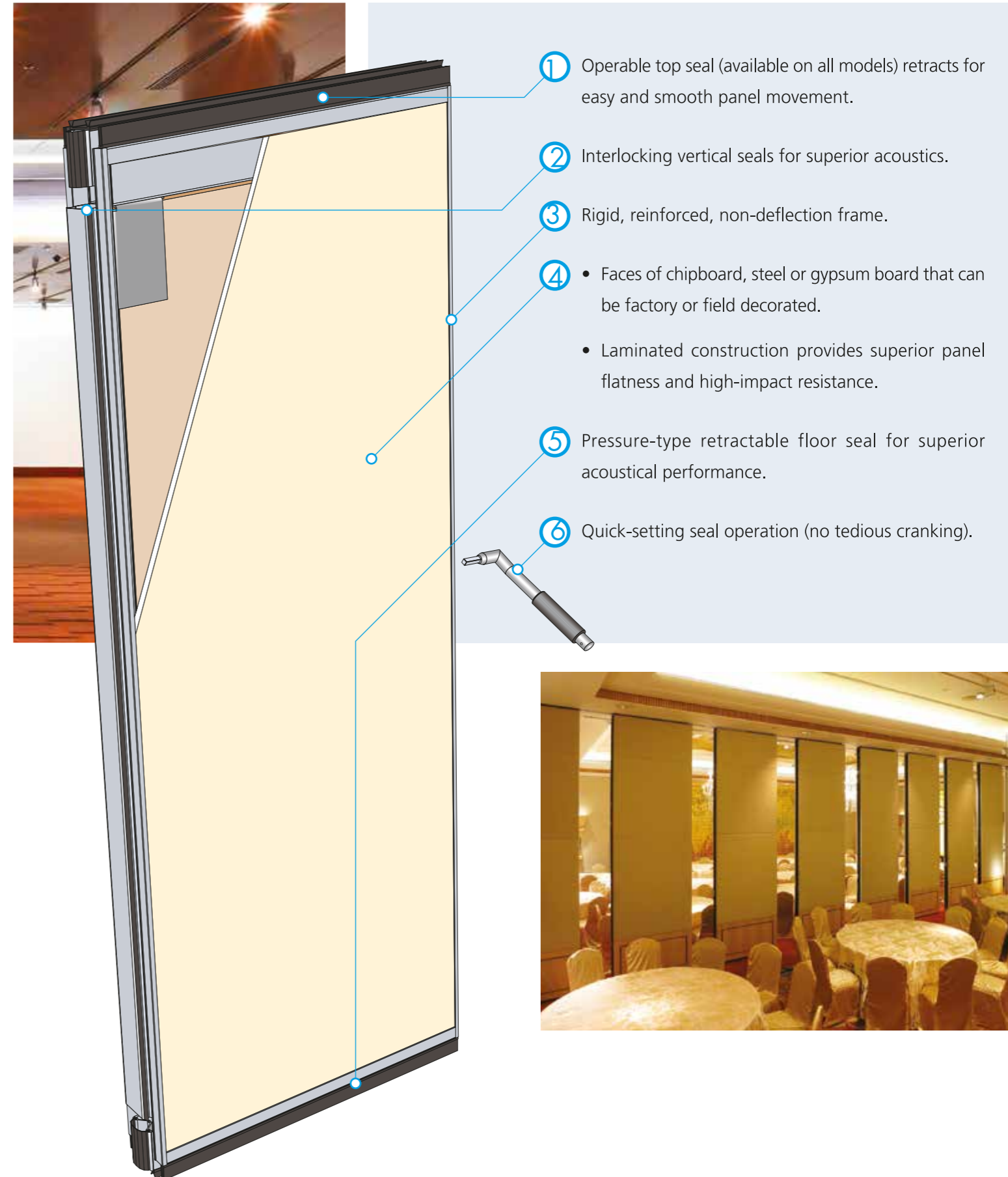
HUFCOR, a US-based corporation, is the global market leader in flexible space management, with an internationally acclaimed heritage of over 110 years. We pride ourselves in our ability to maintain the highest possible standards of differentiated services, including total solutions from design, manufacturing and project management to installation and product maintenance.

Aluminum 5000R is an integral part of HUFCOR's product line which is the broadest available from any operable walls manufacturer. A strong, lightweight 6063-T6 architectural aluminum frame surrounds and protects the face of each panel and a 83mm (3 1/4") thick Aluminum 5000R panel means less storage space. Its sophisticated vertical and horizontal seal systems create optimum acoustic separations with STC rating of up to 51. The top-hung Aluminum 5000R panels are available in heights of up to 5 meters (16 ft) without the need for floor tracks or floor guides.

HUFCOR's globally-proven multi-directional trolley systems create the easiest movement through turns and crosses to remote storage. And our quick-setting seal system creates the fastest operable wall setup and storage.

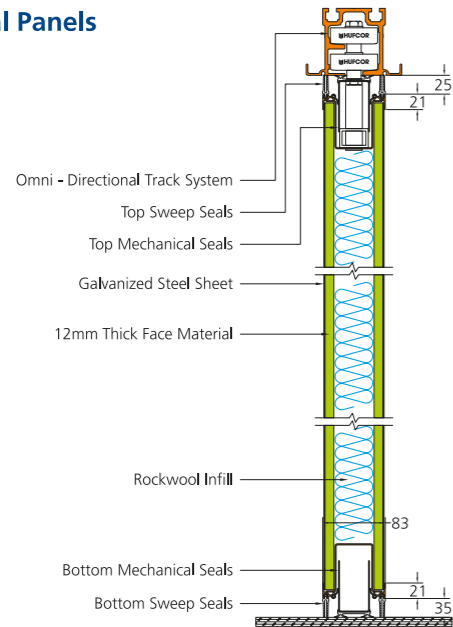


## Features



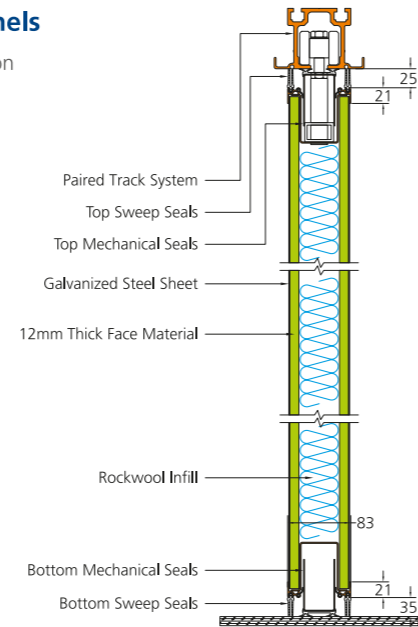
## Omni-Directional Panels

Vertical Section



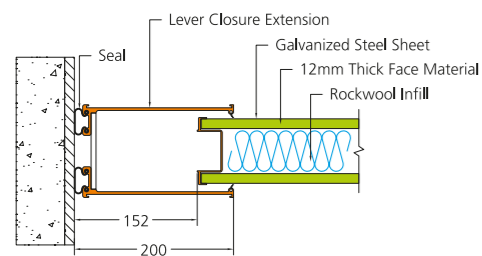
## Paired Panels

Vertical Section

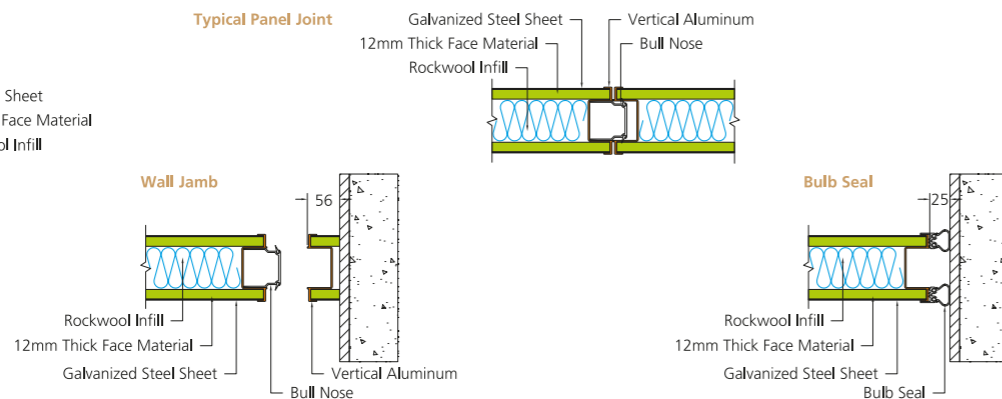


Horizontal Sections

Lever Closure

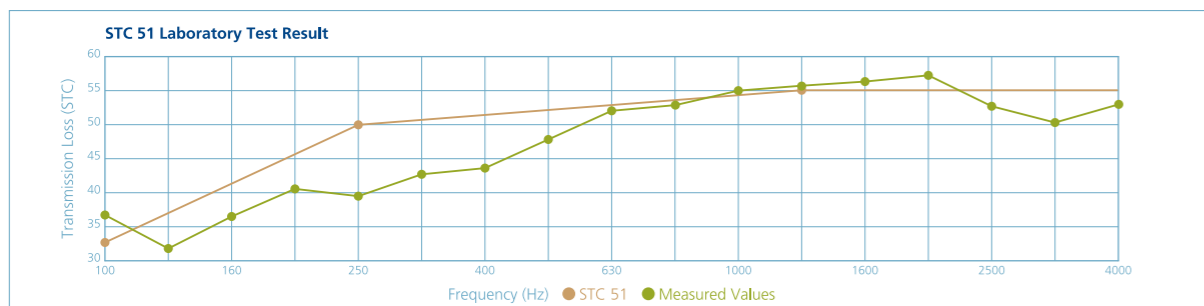


Typical Panel Joint



## Aluminum 5000R STC & Hanging Weights

Omni-Directional Panels Models	Paired Panels Models	Acoustic Ratings (STC)	Approx. Hanging Weight kg/m <sup>2</sup> [lbs/ft <sup>2</sup> ]
5660R	5560R	51	46.5 [9.5]
5650R	5550R	49	37.4 [7.6]
5640R	5540R	47	34.2 [7.0]
5630R	5530R	44	31.6 [6.5]
5610R	5510R	42	27.9 [5.7]
5600R	5500R	38	25.7 [5.3]



## Panel Construction

- Panels are available in 83mm (3 1/4") thickness to 1219mm (4') in width.
- Frames are made of clear anodized 6063-T6 architectural aluminum, designed to capture and protect the edges of acoustical faces.
- Acoustical faces are available in not less than 12mm (1/2") on each side of the panel. They are made of either particle or gypsum board assembled to provide appropriate acoustical performance that meet STC requirements.
- Optional upgrade: Electro-galvanized steel plate laminated to the gypsum board faces are available for extra panel surface protection against rough use and abuse.
- Frames are adaptable to individual or paired panel operations with recessed hinges protruding no more than 25mm (1") from face.

## Seals

- Vertical sound seals have 'tongue and groove' interlocking aluminum profile incorporating vinyl acoustical seals.
- Horizontal sound seals between panels and top supporting track are retractable and provide 25mm (1") nominal operating clearance.
- Horizontal sound seals between panels and floor are retractable and provide a range of 25-40mm (1" - 1 9/16") nominal operating clearance to accommodate normal floor gradient.
- Top and bottom horizontal seals can be operated simultaneously by a removable handle with a single crank action not requiring more than one turn on the spindle shaft.

## Suspension System

- Track consists of clear anodized architectural-grade aluminum alloy 6063-T6. Track incorporates alignment pins for positive alignment, is utilized for optimum sound control, and have integral support for adjoining ceiling, soffit, or plenum sound barrier.

- Track intersections must be designed and constructed to enable smooth operation. They are made from the same architectural-grade extruded aluminum similar to the regular track without variation in texture and colour.
- Track carriers are made with precision ground steel ball bearing wheels encased in molded polymer tires to protect the running aluminum track surface.

## Partition System

- The lead panel has the option of being fixed into an acoustical wall jamb or complete with balloon vinyl seal without the need of a wall jamb.
- "Final closure" panel comes with an expandable jamb exerting a minimum of 110kg (250lbs) force to tighten the partition for optimum acoustics.
- Single or double inset pass doors of the same panel thickness are also available without the need for protruding door hardware.

## Finishes

- Unfinished panels ready to accommodate field-applied finishing.
- Vinyl wallpaper, laminates and fabric finishing are available from the manufacturer's standard list of finishes.

## Acoustics

- The partition system has been tested by a recognized independent acoustical laboratory according to either ISO 140-3 or ASTM E90 standard for sound ratings.

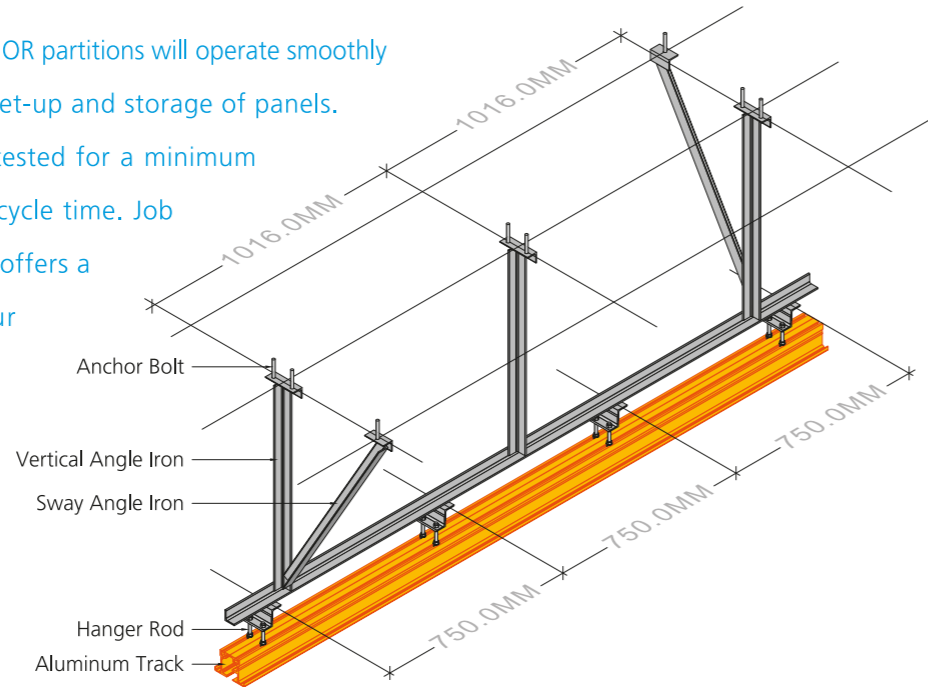
## Warranty

- The partition system purchased and installed by the manufacturer's authorized agents shall be entitled to a warranty of two years against defects in material and workmanship.



# Track Systems

A high quality track system ensures that HUF COR partitions will operate smoothly for years to come and assist in the quick set-up and storage of panels. All HUF COR tracks have been rigorously tested for a minimum of 100 miles (approx. 14 years) of usage cycle time. Job requirements vary, which is why HUF COR offers a wide selection of tracks to meet your operating requirements.

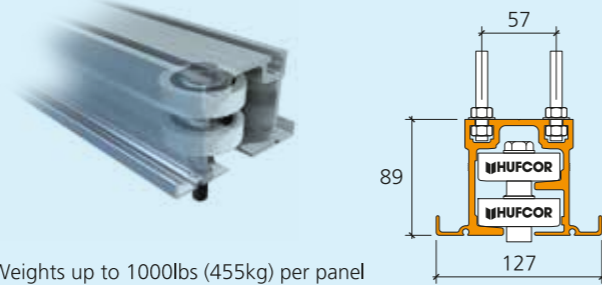


## Omni-Directional Panels

Dual wheel trolleys that negotiate 90° turns, through X, L, and T intersections. Two carriers are provided per panel. Each carrier has two horizontal counter-rotating wheels that roll (not slide) in the track. Each wheel has precision-ground bearings, encased with Delrin™ for quiet operation. Carriers easily negotiate square or angled corners without switches.

### TYPE 36

HUF COR's track and carrier system is patented in US

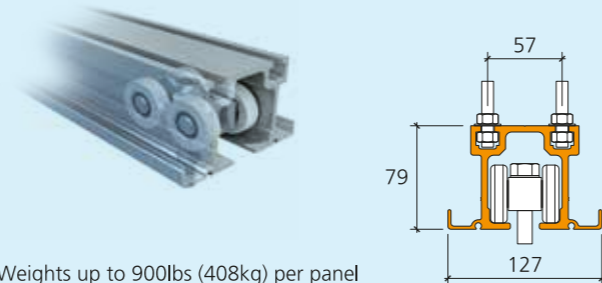


## Paired Panels

One 4-wheeled carrier is provided per panel. Each wheel is made of molded polymer tires on hardened steel ball bearings.

### TYPE 40

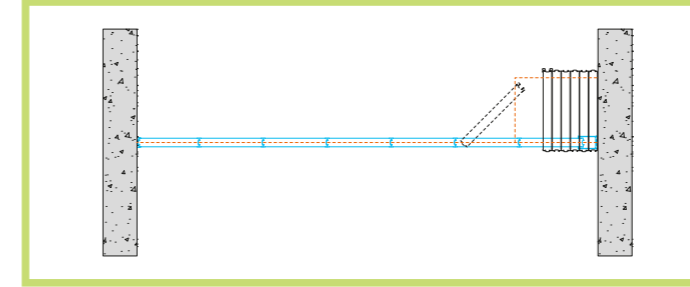
Resilient mounted body for quiet operation and load distribution



# Operable Partitions Types

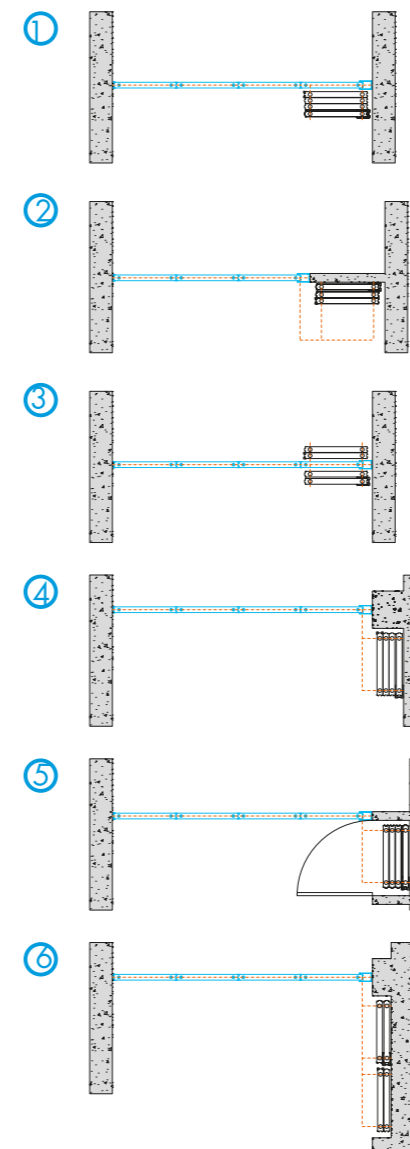
Aluminum 5000R

## Omni-Directional Panels

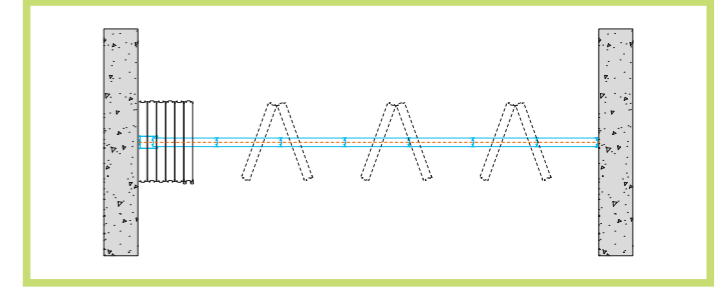


Omni-directional panels provide the ultimate flexibility to your operations because each individual panel can easily turn around corners and move to alternate locations or remote storage. Therefore, many different storage layouts can be created to fit your floor design and layout.

### Storage Layout Options

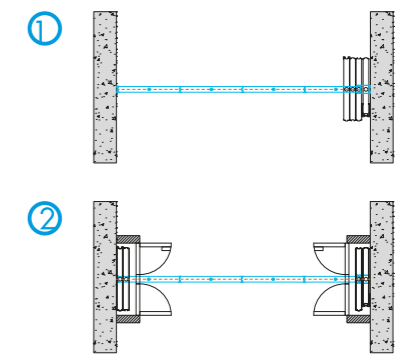


## Paired Panels



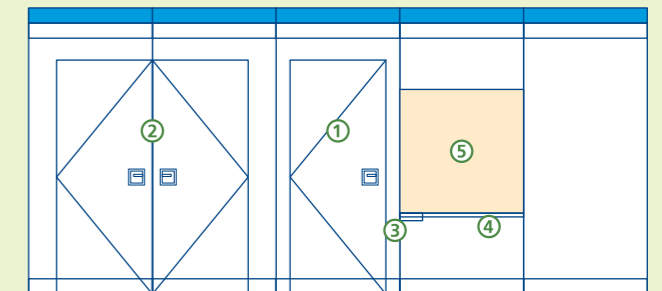
When remote storage is not required, the center-hung panels hinged in groups of two or three, are the ideal solution for quicker and easier set up, than omni-direction panels. Optional hinging is available to accommodate moldings or other decorations. Acoustical ratings are the same as omni-direction panels.

### Storage Layout Options



## Accessories

A variety of accessories and work surfaces are available to provide the functionality and aesthetics you need.



- ① Single Pass Door
- ② Double Pass Door
- ③ Eraser Pocket
- ④ Recessed Chalk Tray
- ⑤ Work Surface: Tackboards / Dry Marker Board